

Student Guide: UCEN Manchester Bursary

September 2025



What is the UCEN Manchester Bursary?

The UCEN Manchester Bursary is a financial support fund to help eligible students with the cost of living while studying.

It's here to support students who face extra challenges – like balancing study with caring responsibilities, living independently, or facing unexpected financial hardship.

Who Can Apply?

You can apply if you're:

- enrolled on a full-time higher education course (or part-time with 60+ credits)
- fully enrolled (not pending)
- receiving your full Student Loan entitlement
- attending regularly (at least 85% attendance) and engaging in your studies
- willing to provide supporting documents



Who Might Get Priority?

Students from the following backgrounds may be contacted directly for support:

- low-income households (under £30,000 to help support access to Disabled Student Allowance)
- first in family to attend university
- disabled students
- mature students
- commuters
- LGBTQ+ students
- muslim students
- estranged students or care leavers
- young carers

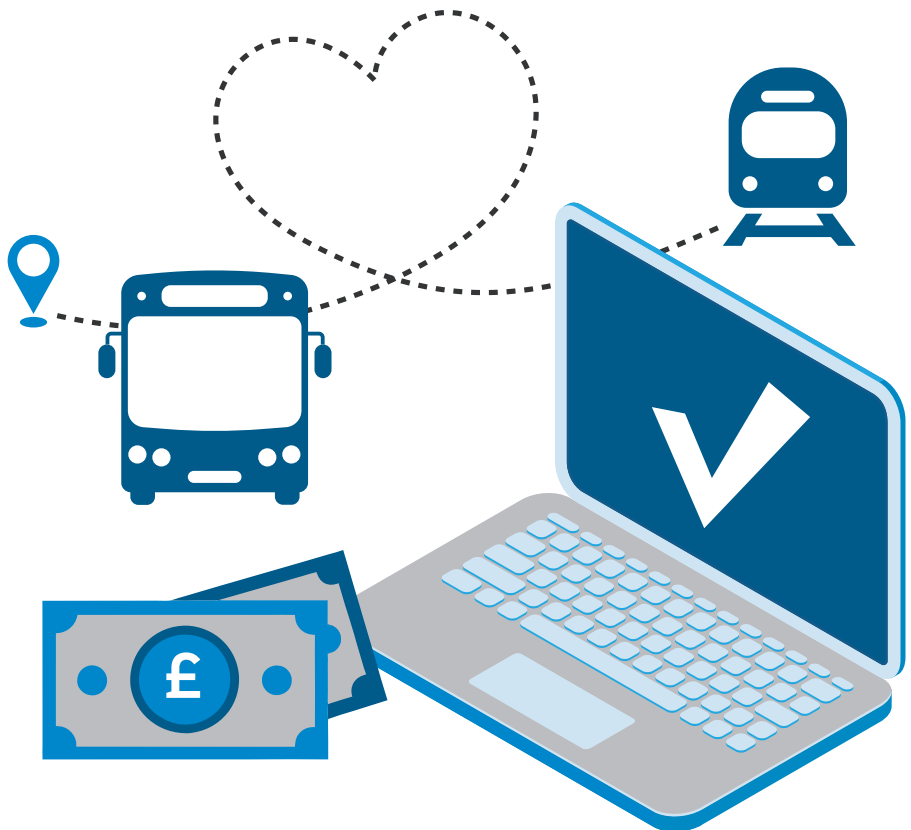


What Can the Bursary Help With?

The UCEN Manchester Bursary is not intended to cover everyday living costs such as rent, bills, or food on a regular basis. Instead, these should be met through your Student Maintenance Loan.

Support is available for:

- course equipment (laptops; uniforms; specialist toolkits)
- travel for interviews, placements, auditions
- unexpected bills that may leave you in hardship
- disability-related needs (like assessments or devices).



What Do You Need to Apply?

To make sure the bursary reaches the students who genuinely need it most, we do ask for documentary evidence when you apply.

This isn't about making personal judgments; it's about being fair and responsible with the limited funds we have available. You'll need to provide:

- student finance notification and loan schedule (available from Student Finance Portal)
- 3 months' bank statements for all accounts in your name (and partner's if relevant)
- mini bank statement (on day of applying)
- other documents depending on your circumstances (e.g. child benefit, partner's income)

Assessments are conducted by UCEN Manchester's Careers and Student Financial Support Lead.

During your bursary assessment, you'll also have the opportunity to receive one-to-one guidance to help you budget effectively and build valuable financial management skills for the future.



How to Apply

1. Get an application form:

- From your campus Future U Hub
- By emailing: futureufinance@ucenmanchester.ac.uk
- From the website: [Higher Education Fees and Finance](#)

2. Complete the form and book an appointment with the Future U team.

[Future U Student Support City Centre Campus \(office365.com\)](#)

[Openshaw Campus - Future U Student Support](#)

3. Submit your documents and attend your assessment.

When Will I Be Paid?

We'll only start accepting bursary applications after October Reading Week. This gives time for your Student Maintenance Loan to be in place, which should support you through the first few weeks. It also helps us check that you're fully enrolled, attending regularly, and settled into your course before we look at offering extra financial support.

- Once assessed, you'll receive payment within 14 working days – note this will show as from LTE Group in your statement
- Need a laptop now? Eden Red Vouchers can help you get one sooner
- Emergency? You may get same-day Eden Red Vouchers for food, toiletries or clothing.

₪

₪

₪

₪

₪

₪

₪

₪



What Are the 4 Bursary Elements?

Total possible support: Up to £1,550

APP Award (Up to £500):

- For students from underrepresented backgrounds (e.g. low income, care leaver, parent, etc.)

Cost of Living Award (Up to £500):

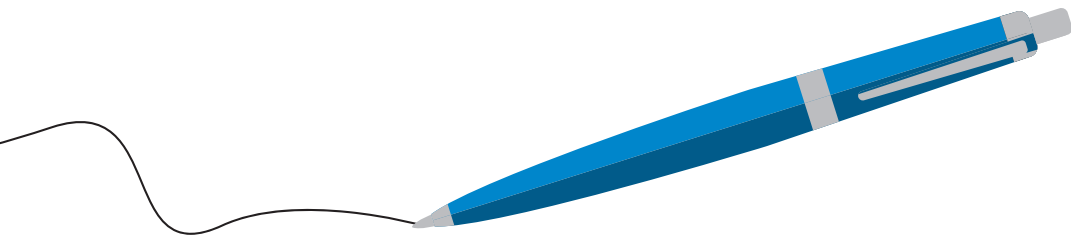
- For short-term financial hardship (not everyday costs or debt)

Removing Barriers Award (Up to £300):

- For disabled students needing extra help not covered by DSA

Progression Award (£250):

- For students progressing from The Manchester College Level 3 to UCEN HE



Who Can Help Me?

Future U Student Support Team:

Help with application and evidence

Financial advice and budgeting

Referrals for additional support

Email: futureufinance@ucenmanchester.ac.uk